



**Sandymount Park ETSS**

**Parents' Association AGM  
Wednesday 23rd October 2024**

# Agenda

- School Update – Aisling
- Student support system overview
- Overview of the Parents Association – Lesley Hughes (Secretary) “ What do we do “
- Overview of Parent Association Activities 2023/202
- Achievements and Financial Overview
- Future Plans for 2024/2025
- Committee Structure and Roles
- Election for Parents Association 2024-2025

# School Update

- Whole School Evaluation
- School support system
- Leaving Cert and Junior Cert results
- Full cohort of teachers
- Cast for Guys and Dolls
- Empathy Week
- Trip Kilmainham
- TY trip to Italy
- Sandymount TY IT community support
- Extra Curricular Fair
- 1<sup>st</sup> Year Trip Alive Outside
- Senior German IFI Trip
- Student Council Elections



# Whole School Evaluation

During a WSE-MLL, the inspectors evaluate and report under the following areas of enquiry:

**1) Quality of school management**

**2) Quality of learning and teaching**

**3) Quality of support for students' wellbeing**

# Whole School Evaluation

Sandymount Park  
ETSS was awarded the  
highest evaluation of  
**excellent** across a  
range of categories  
under the  
Inspectorate's new  
Quality Framework

*The highly effective  
board of  
management and  
senior leadership team  
created a culture of  
collaboration and  
reflective practice with  
very well-distributed  
leadership and very  
well-developed whole-  
school structures*

*The quality of  
teaching and learning  
was **very good**  
overall; lessons  
observed ranged from  
**good to excellent**.*

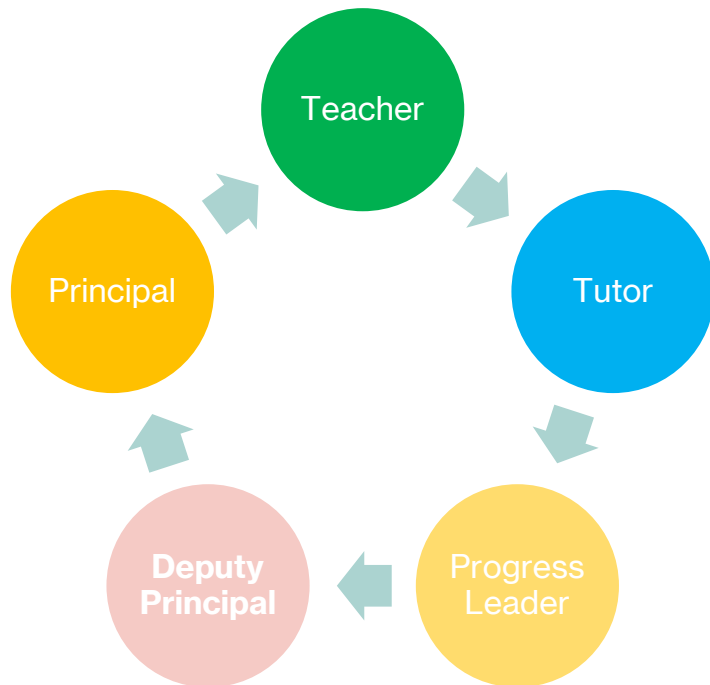
*The principal's high  
expectations for all  
learners and passion  
for learning and  
teaching was palpable*

*The overall quality of  
leadership and  
management was  
**excellent***



Scan me!

# Ladder of Referral



Teacher – all class and subject based issues, homework

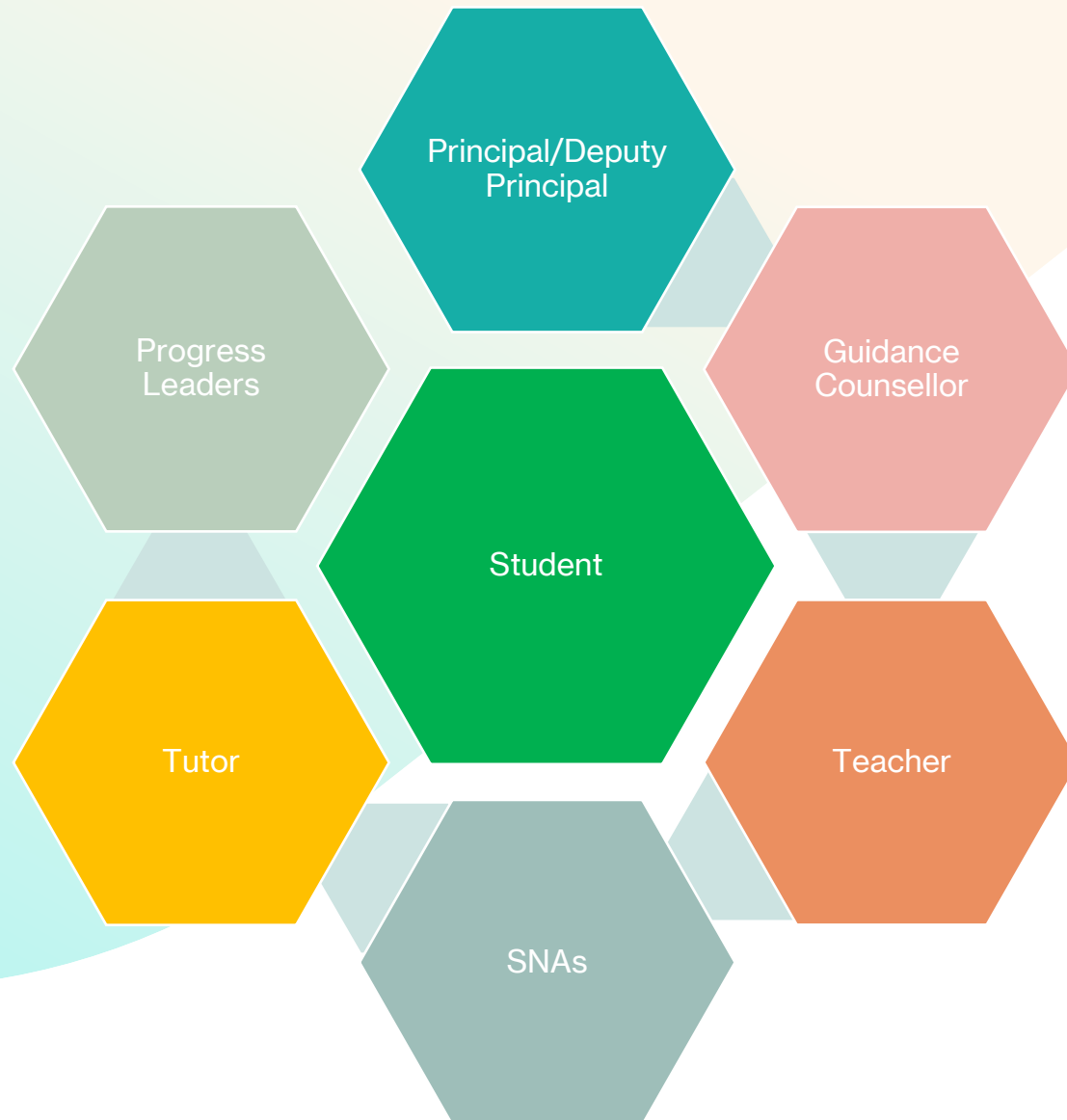
Tutor – pastoral support, 'go to' person, checks in daily, communication

Progress Leader – oversees the social, emotional and academic progress of the group, communication

Deputy Principal – administration and overseeing the smooth running of the school, curriculum, staff and student management etc

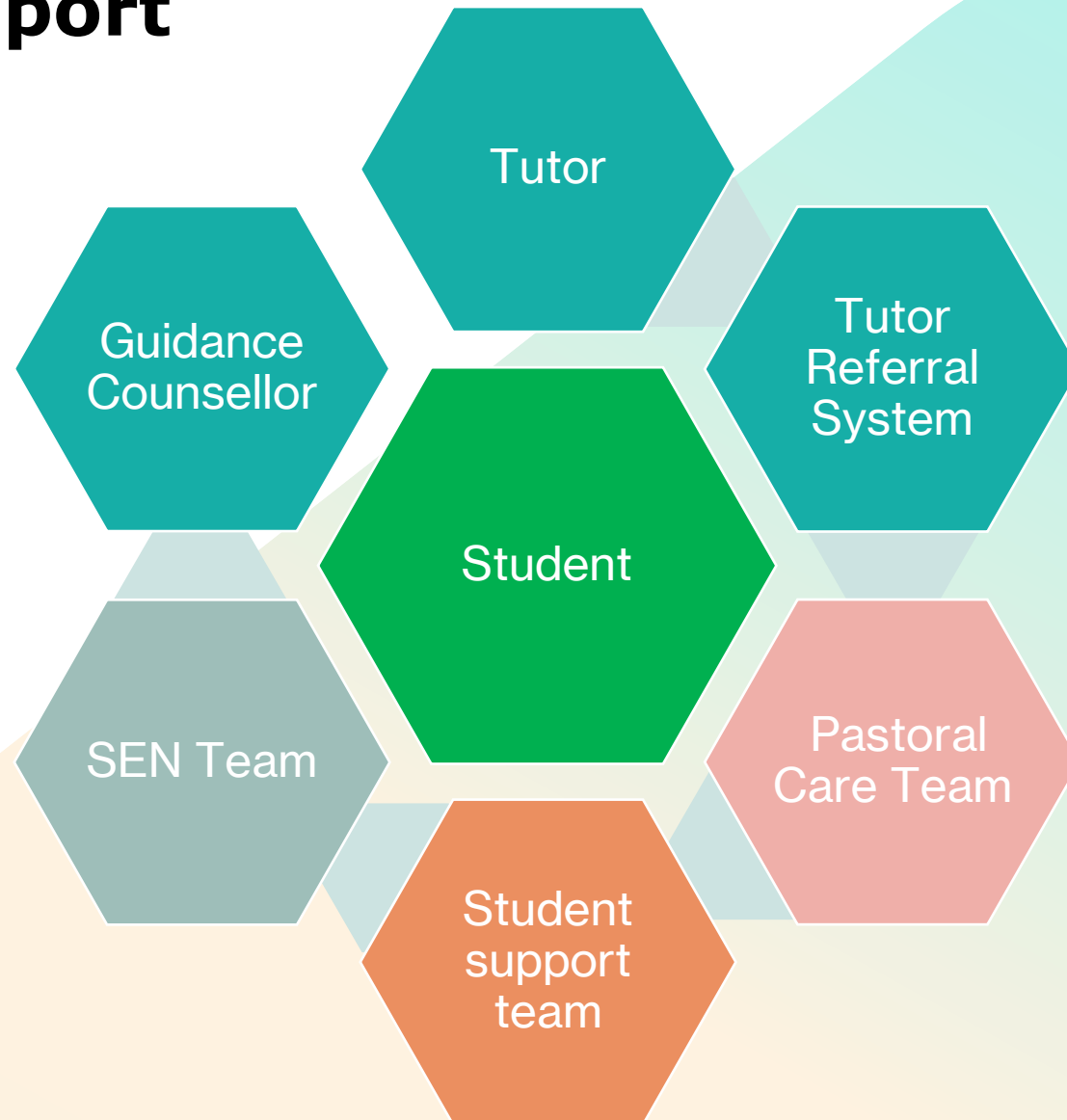
Principal – educational leader, key decision-maker, responsible for creating a positive and effective learning environment.

The manner in which the school manages and addresses the wellbeing of all its students is evaluated



The overall quality of  
supports for  
students' wellbeing  
was awarded the  
status of excellent

# Student support



*This created a positive learning environment for students to be happy, believe in themselves and feel acknowledged and supported*

# Leaving Certificate Progression 2024

26 students sat the Leaving Certificate in 6 subjects or more

5 students - PLC

10 students – UCD

2 students – Trinity

4 students – TUD

1 student - UK

## Junior Certificate 2024

55 students sat the Junior Certificate in June

Increase in number of distinctions

Reduction in number of merits

Above the National Average in many subjects and to 2023

# Empathy Week

**EMPATHY  
WEEK**



Anti-Bullying Check In  
October 24

**70%** of students responded to our survey.

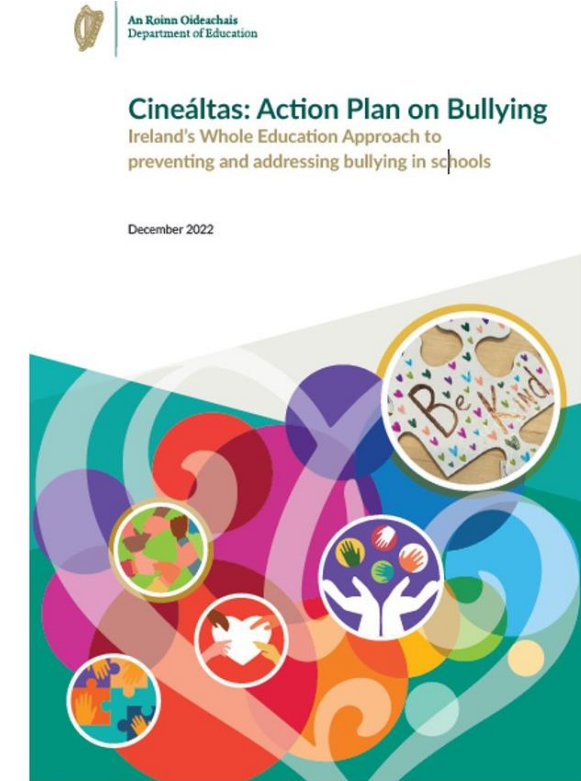
**8%** of students have noticed bullying behaviour.

**4%** felt they have been the target of bullying.

**98%** would tell someone at school if there was a problem.

**EMPATHY  
WEEK**



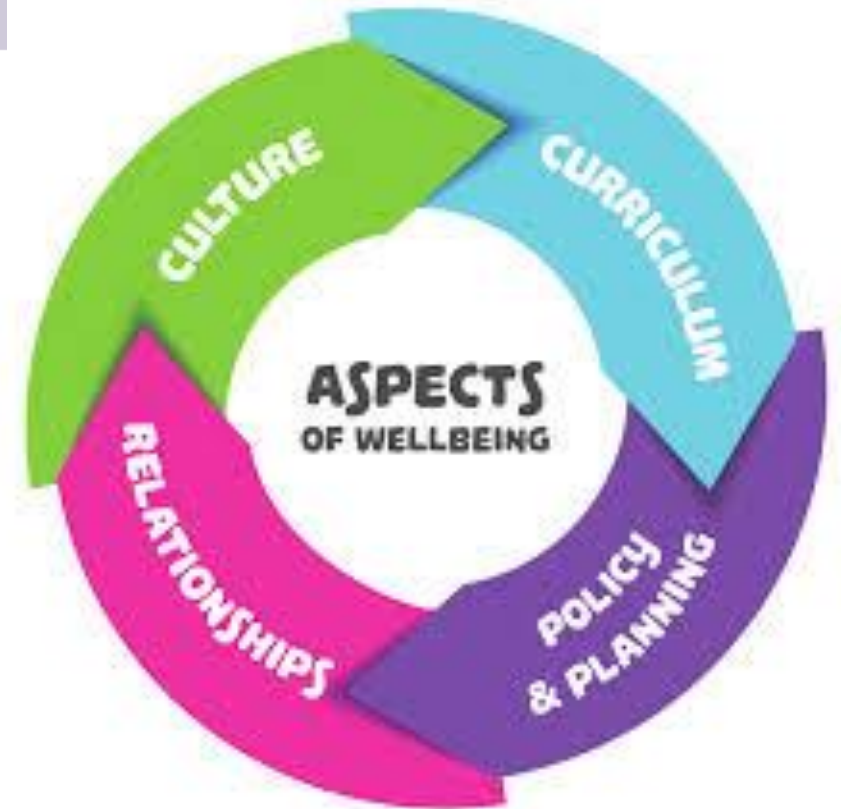


- ***Ireland's Whole Education Approach to preventing and addressing bullying in schools***

## Definition of bullying behaviour

Bullying is targeted behaviour, online or offline, that causes harm. The harm caused can be physical, social and/or emotional in nature. Bullying behaviour is repeated over time and involves an imbalance of power in relationships between two people or groups of people in society.

Student friendly version of  
policy



# Supports for parents



**Scan me!**



## Resources for Parents

From [Department of Education](#)

Published on 27 June 2024

Last updated on 16 August 2024

1. [Wellbeing](#)
2. [Cyberbullying and Online Safety](#)
3. [The Ombudsman for Children](#)
4. [Other Resources](#)



# EXTRA-CURRICULAR ACTIVITIES TIMETABLE

	Monday	Tuesday	Wednesday	Thursday	Friday
Lunch	Newspaper Debating	Language and Culture Club  Librarian Committee	Club Gaelge  Table Tennis  Choir  Student Council	Karaoke and Just Dance Club  Junior Art Club	Kahoot Club  Creative Schools  Green Schools
After School	Girls Football  Literacy Club  Gym Club  Boys Basketball	Run Club  Senior Music Club  Creative Writing  Baking Club  Boys Football	Junior Music Club  Girls Basketball  Podcasting and Radio	Boys and Girls Hockey  Senior Art Club	



**Hockey Club**



**Football Club**



**Library Committee**



**Culture Club**



**German Senior IFI Trip**



**TY trip to Italy**



# School Policies

Can be found on the website <https://sandymountparketss.ie/about/policies/>

Important that parents know where to find Child Protection and Anti-Bullying Policies and the School Trips Policy



Scan me!

